

## \$649,900 - 6601 10310 102 Street, Edmonton

MLS® #E4432022

**\$649,900**

2 Bedroom, 2.00 Bathroom, 868 sqft

Condo / Townhouse on 0.00 Acres

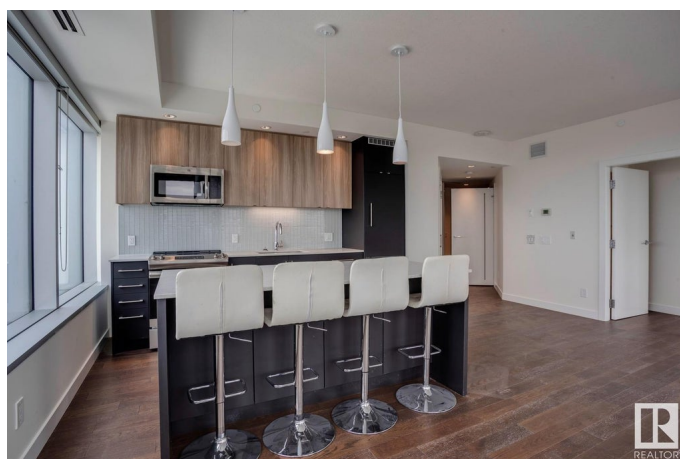
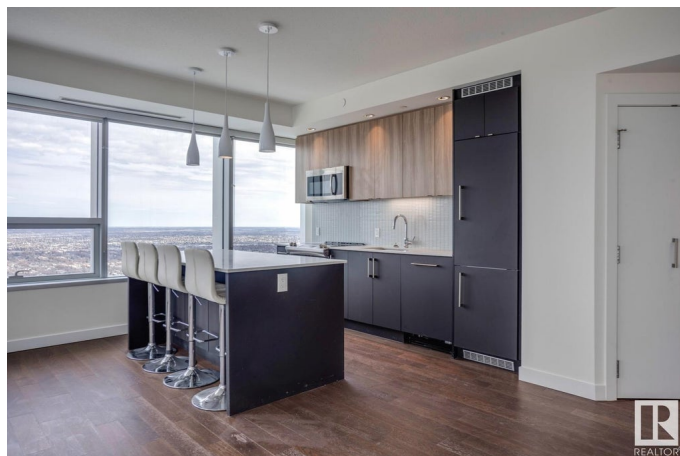
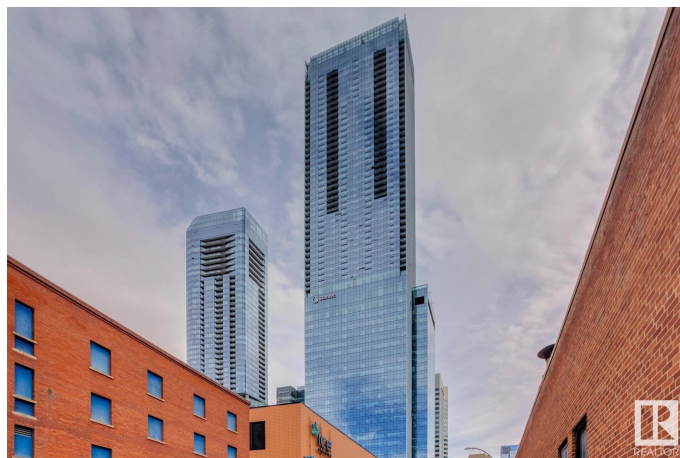
Downtown (Edmonton), Edmonton, AB

PENTHOUSE UNIT IN WESTERN CANADA'S TALLEST BUILDING! Live in Luxury at SKY Residences, located in the heart of the vibrant Ice District. This stylish 868 sqft, 2 bed/2 bath has so much to offer.....premium finishing, quartz counters, hardwood/tile throughout, floor to ceiling windows, patio, panoramic views of the City, in-suite laundry, TWO TITLED underground parking stalls, and more. This unparalleled complex offers the best in exceptional amenities: access to JW Marriott services, personal concierge service, access to the 30th floor that includes indoor/outdoor social/recreation centre, party room/kitchen, golf simulator, fitness centre, fireplaces, hot tub, BBQ areas, and more. Indoor access to Rogers Place, steps to great shopping and fine dining, and direct connection to the downtown pedway and LRT systems. Live the good life in Edmonton's downtown core!

Built in 2016

### Essential Information

MLS® #	E4432022
Price	\$649,900
Bedrooms	2
Bathrooms	2.00
Full Baths	2
Square Footage	868



Acres	0.00
Year Built	2016
Type	Condo / Townhouse
Sub-Type	Apartment High Rise
Style	Penthouse
Status	Active

### Community Information

Address	6601 10310 102 Street
Area	Edmonton
Subdivision	Downtown (Edmonton)
City	Edmonton
County	ALBERTA
Province	AB
Postal Code	T5J 0K5

### Amenities

Amenities	Air Conditioner, Ceiling 9 ft., Club House, Exercise Room, Hot Tub, No Animal Home, No Smoking Home, Party Room, Patio, Security Door, Social Rooms, Storage-Locker Room, Concierge Service
Parking	Double Indoor, Heated, Underground

### Interior

Interior Features	ensuite bathroom
Appliances	Dishwasher-Built-In, Dryer, Microwave Hood Fan, Refrigerator, Stove-Electric, Washer, Window Coverings
Heating	Fan Coil, Natural Gas
# of Stories	66
Stories	1
Has Basement	Yes
Basement	None, No Basement

### Exterior

Exterior	Concrete, Metal
Exterior Features	Public Transportation, River Valley View, Schools, Shopping Nearby, View City, View Downtown, See Remarks
Roof	EPDM Membrane
Construction	Concrete, Metal
Foundation	Concrete Perimeter

**Additional Information**

Date Listed	April 19th, 2025
Days on Market	5
Zoning	Zone 12
Condo Fee	\$745

DATA IS DEEMED RELIABLE BUT IS NOT GUARANTEED ACCURATE BY THE REALTORS® ASSOCIATION OF EDMONTON. COPYRIGHT 2025 BY THE REALTORS® ASSOCIATION OF EDMONTON. ALL RIGHTS RESERVED.Trademarks are owned or controlled by the Canadian Real Estate Association (CREA) and identify real estate professionals who are members of CREA (REALTOR®, REALTORS®) and/or the quality of services they provide (MLS®, Multiple Listing Service®)

Listing information last updated on April 24th, 2025 at 6:02am MDT