

Courtesy Of Logan Patterson Of Logic Realty

\$80,000 - 107 10811 115 Street, Edmonton

MLS® #E4431746

\$80,000

1 Bedroom, 1.00 Bathroom, 603 sqft
Condo / Townhouse on 0.00 Acres

Queen Mary Park, Edmonton, AB

AFFORDABLE & TURN KEY! Comfortable 1 bed 1 bath, with upgraded stainless steel appliances, plus a convection stove, new paint and a spacious bedroom with plenty of storage! **LOW Condo Fees, Low Taxes, and a low mortgage payment, great starter home opportunity!** Located on a quiet tree lined street, close to shopping, and easy access to NAIT, and MacEwan. Comes with one, energized parking stall.

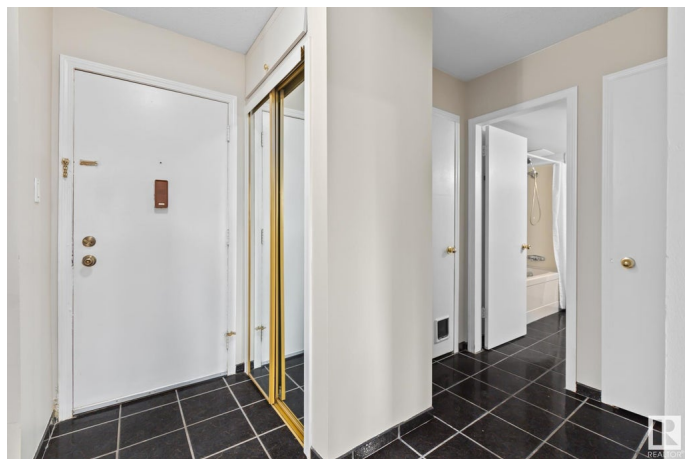
Built in 1968

Essential Information

MLS® #	E4431746
Price	\$80,000
Bedrooms	1
Bathrooms	1.00
Full Baths	1
Square Footage	603
Acres	0.00
Year Built	1968
Type	Condo / Townhouse
Sub-Type	Lowrise Apartment
Style	Single Level Apartment
Status	Active

Community Information

Address 107 10811 115 Street



Area	Edmonton
Subdivision	Queen Mary Park
City	Edmonton
County	ALBERTA
Province	AB
Postal Code	T5H 3L2

Amenities

Amenities	Off Street Parking, On Street Parking, Intercom, No Animal Home, No Smoking Home, Security Door, Storage-Locker Room, Vinyl Windows
Parking Spaces	1
Parking	Stall

Interior

Appliances	Dishwasher-Built-In, Hood Fan, Refrigerator, Stove-Electric
Heating	Baseboard, Natural Gas
# of Stories	3
Stories	1
Has Basement	Yes
Basement	None, No Basement

Exterior

Exterior	Wood, Brick, Stucco
Exterior Features	Back Lane, No Through Road, Private Setting, Public Transportation, Schools, Shopping Nearby, Treed Lot
Roof	Flat
Construction	Wood, Brick, Stucco
Foundation	Concrete Perimeter

Additional Information

Date Listed	April 18th, 2025
Days on Market	6
Zoning	Zone 08
Condo Fee	\$343

DATA IS DEEMED RELIABLE BUT IS NOT GUARANTEED ACCURATE BY THE REALTORS® ASSOCIATION OF EDMONTON. COPYRIGHT 2025 BY THE REALTORS® ASSOCIATION OF EDMONTON. ALL RIGHTS RESERVED. Trademarks are owned or controlled by the Canadian Real Estate Association (CREA) and identify real estate professionals who are members of CREA (REALTOR®, REALTORS®) and/or the quality of services they provide (MLS®, Multiple Listing Service®)

Listing information last updated on April 24th, 2025 at 5:32am MDT