

## \$199,900 - 402 Graybriar Green, Stony Plain

MLS® #E4431415

**\$199,900**

2 Bedroom, 1.00 Bathroom, 537 sqft

Condo / Townhouse on 0.00 Acres

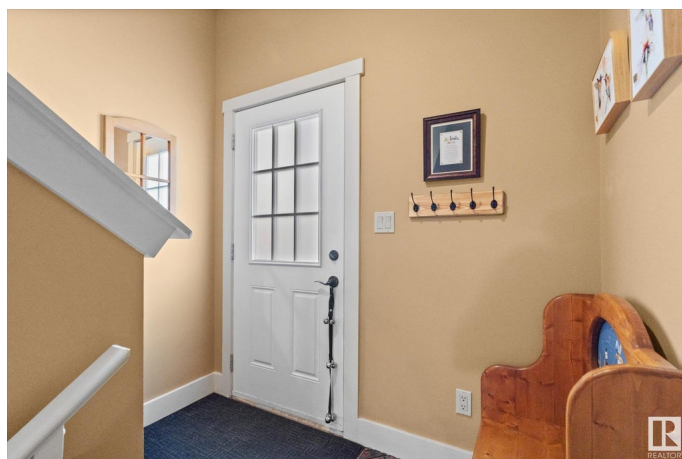
Graybriar, Stony Plain, AB

Welcome to this charming 2-bedroom bi-level condo, located on the quiet, west side of the complex. Youâ€™ll love the mountain chalet feel! Inside, you'll find a bright and open layout! The open living room, dining area, and kitchen island, the perfect space for both relaxation and entertaining. Garden doors open to a private balcony, perfect for enjoying the fresh air. Ample storage options throughout the unit ensure that all your belongings have a place. This unit is equipped with two assigned parking stalls with plug-ins. Close to the highway, this condo provides easy access for commuting, as well as a golf course right beside you and various amenities right around the corner! Experience the Graybriar GreenÂ lifestyle!

Built in 2010

### Essential Information

MLS® #	E4431415
Price	\$199,900
Bedrooms	2
Bathrooms	1.00
Full Baths	1
Square Footage	537
Acres	0.00
Year Built	2010



Type	Condo / Townhouse
Sub-Type	Townhouse
Style	Multi Level Apartment
Status	Active

### Community Information

Address	402 Graybriar Green
Area	Stony Plain
Subdivision	Graybriar
City	Stony Plain
County	ALBERTA
Province	AB
Postal Code	T7Z 0G1

### Amenities

Amenities	Ceiling 9 ft., Storage-In-Suite, Vinyl Windows
Parking Spaces	2
Parking	2 Outdoor Stalls

### Interior

Appliances	Dishwasher-Built-In, Dryer, Fan-Ceiling, Microwave Hood Fan, Refrigerator, Stove-Electric, Washer, Window Coverings, Curtains and Blinds
Heating	Forced Air-1, Natural Gas
Stories	2
Has Basement	Yes
Basement	Full, Finished

### Exterior

Exterior	Wood, Vinyl
Exterior Features	Corner Lot, Cul-De-Sac, Golf Nearby, Paved Lane, Playground Nearby, Private Setting
Roof	Asphalt Shingles
Construction	Wood, Vinyl
Foundation	Concrete Perimeter

### Additional Information

Date Listed	April 17th, 2025
Days on Market	7
Zoning	Zone 91

Condo Fee                    \$448

DATA IS DEEMED RELIABLE BUT IS NOT GUARANTEED ACCURATE BY THE REALTORS® ASSOCIATION OF EDMONTON. COPYRIGHT 2025 BY THE REALTORS® ASSOCIATION OF EDMONTON. ALL RIGHTS RESERVED.Trademarks are owned or controlled by the Canadian Real Estate Association (CREA) and identify real estate professionals who are members of CREA (REALTOR®, REALTORS®) and/or the quality of services they provide (MLS®, Multiple Listing Service®)

Listing information last updated on April 24th, 2025 at 6:02am MDT