

\$329,000 - 4250 29 Avenue, Edmonton

MLS® #E4428419

\$329,000

4 Bedroom, 3.50 Bathroom, 1,623 sqft

Condo / Townhouse on 0.00 Acres

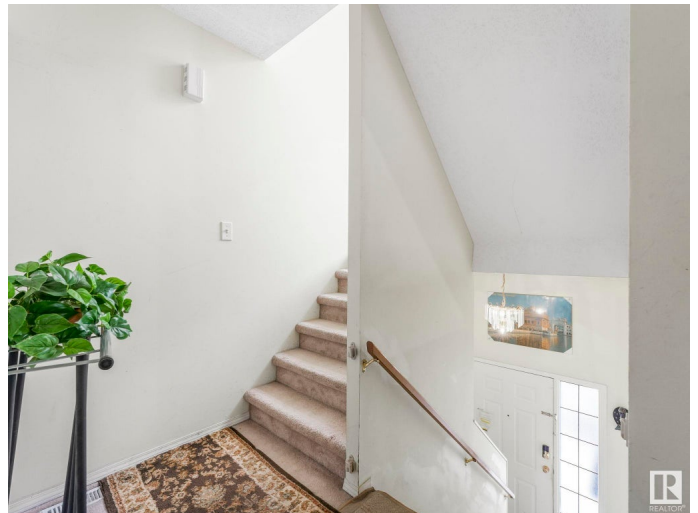
Bisset, Edmonton, AB

Investors or first time buyers ,here is a perfect opportunity for you to own this bright open floor plan,spacious 3 bedroom fully finished end unit town house in very desirable neighborhood of Bisset.Ground floor have a room and single car garage .Going upstairs you see large living and dinning area equipped with corner fireplace and large windows for plenty of day light ,kitchen fitted with oak cabinets and appliances .Second floor or upstairs have 3 bedrooms and a full 4 pc bath.Primary bedrooms has 3 piece bath and nice size closet.This unit is located near all amenities like bus service school shopping center So come on down have a look and call it HOME!!

Built in 1999

Essential Information

MLS® #	E4428419
Price	\$329,000
Bedrooms	4
Bathrooms	3.50
Full Baths	3
Half Baths	1
Square Footage	1,623
Acres	0.00
Year Built	1999



Type	Condo / Townhouse
Sub-Type	Townhouse
Style	2 Storey
Status	Active

Community Information

Address	4250 29 Avenue
Area	Edmonton
Subdivision	Bisset
City	Edmonton
County	ALBERTA
Province	AB
Postal Code	T6L 7E9

Amenities

Amenities	No Animal Home, No Smoking Home, See Remarks
Parking	Single Garage Attached

Interior

Interior Features	ensuite bathroom
Appliances	Dishwasher-Built-In, Dryer, Fan-Ceiling, Garage Control, Garage Opener, Washer, Window Coverings, Refrigerators-Two, Stoves-Two
Heating	Forced Air-1, Natural Gas
Stories	3
Has Basement	Yes
Basement	Full, Finished

Exterior

Exterior	Wood, Stucco
Exterior Features	Airport Nearby, Corner Lot, Flat Site, Golf Nearby, Landscaped, No Back Lane, Paved Lane, Playground Nearby, Public Transportation, Schools, See Remarks
Roof	Asphalt Shingles
Construction	Wood, Stucco
Foundation	Concrete Perimeter

Additional Information

Date Listed	March 31st, 2025
Days on Market	26
Zoning	Zone 29

Condo Fee \$310

DATA IS DEEMED RELIABLE BUT IS NOT GUARANTEED ACCURATE BY THE REALTORS® ASSOCIATION OF EDMONTON. COPYRIGHT 2025 BY THE REALTORS® ASSOCIATION OF EDMONTON. ALL RIGHTS RESERVED.Trademarks are owned or controlled by the Canadian Real Estate Association (CREA) and identify real estate professionals who are members of CREA (REALTOR®, REALTORS®) and/or the quality of services they provide (MLS®, Multiple Listing Service®)

Listing information last updated on April 26th, 2025 at 12:02am MDT