

\$520,000 - 240 Foxtail Way, Sherwood Park

MLS® #E4428199

\$520,000

4 Bedroom, 3.50 Bathroom, 1,611 sqft
Single Family on 0.00 Acres

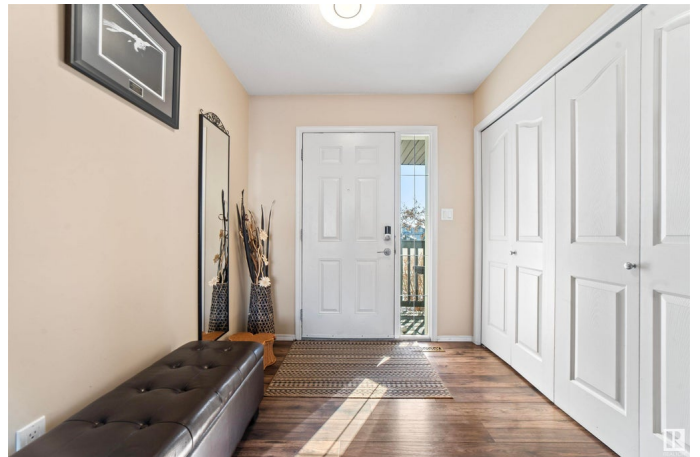
Foxboro, Sherwood Park, AB

Welcome to this stunning two-storey home located in the desirable neighbourhood of Foxboro in Sherwood Park, set on a beautiful 32-foot pocket lot. This home is packed with upgrades and features that are sure to impress. The main floor boasts a spacious living room, a modern kitchen with newer appliances, a cozy dining area, convenient main floor laundry, and a half bath. Upstairs, you'll find a large bonus room, a primary bedroom with its own ensuite, plus two additional bedrooms and a full bathroom. The fully finished basement includes a bedroom, a full bathroom, and a second living room, offering plenty of space for family and guests. The expansive backyard is beautifully landscaped and features a deck with a gazebo and an outlet for a hot tub. The house has vinyl flooring throughout and recent upgrades include a new water tank (2024), roof shingles (2024).

Built in 2007

Essential Information

MLS® #	E4428199
Price	\$520,000
Bedrooms	4
Bathrooms	3.50
Full Baths	3



Half Baths	1
Square Footage	1,611
Acres	0.00
Year Built	2007
Type	Single Family
Sub-Type	Detached Single Family
Style	2 Storey
Status	Active

Community Information

Address	240 Foxtail Way
Area	Sherwood Park
Subdivision	Foxboro
City	Sherwood Park
County	ALBERTA
Province	AB
Postal Code	T8A 3C2

Amenities

Amenities	Air Conditioner, Deck, Gazebo
Parking	Double Garage Attached

Interior

Interior Features	ensuite bathroom
Appliances	Air Conditioning-Central, Dishwasher-Built-In, Dryer, Garage Control, Garage Opener, Microwave Hood Fan, Storage Shed, Stove-Electric, Washer, TV Wall Mount, Curtains and Blinds
Heating	Forced Air-1, Natural Gas
Stories	3
Has Basement	Yes
Basement	Full, Finished

Exterior

Exterior	Wood, Vinyl
Exterior Features	Fenced, Flat Site, Golf Nearby, Landscaped, Playground Nearby, Public Transportation, Schools, Shopping Nearby
Roof	Asphalt Shingles
Construction	Wood, Vinyl
Foundation	Concrete Perimeter

School Information

Elementary	Wes Hosford Elementary
Middle	F.R. Haythorne Junior High
High	Bev Facey Community High

Additional Information

Date Listed March 29th, 2025

Days on Market 10

Zoning Zone 25

DATA IS DEEMED RELIABLE BUT IS NOT GUARANTEED ACCURATE BY THE REALTORS® ASSOCIATION OF EDMONTON. COPYRIGHT 2025 BY THE REALTORS® ASSOCIATION OF EDMONTON. ALL RIGHTS RESERVED. Trademarks are owned or controlled by the Canadian Real Estate Association (CREA) and identify real estate professionals who are members of CREA (REALTOR®, REALTORS®) and/or the quality of services they provide (MLS®, Multiple Listing Service®)

Listing information last updated on April 8th, 2025 at 6:47am MDT