

\$529,000 - 7714 174a Avenue, Edmonton

MLS® #E4427878

\$529,000

3 Bedroom, 2.50 Bathroom, 1,777 sqft
Single Family on 0.00 Acres

Crystallina Nera West, Edmonton, AB

Everything a family needs plus a side entrance for future basement suite development. Built by Welcome Homes, a reputable builder since 1977! This home comes with style and function, not your typical duplex. Open-to-below front entrance, double attached garage, 3 bedrooms, large bonus room and 2 and a half baths. Backing on a walking trail and park. Upgraded lighting package and electric fireplace with large mantel feature. Don't like clutter? This home comes with a large pantry, spacious bootroom, linen closet, broom closet, generous bedroom closets and a huge walk-in for the primary bedroom. Modern, crisp and clean. Welcome Home!



Built in 2024

Essential Information

| | |
|----------------|---------------|
| MLS® # | E4427878 |
| Price | \$529,000 |
| Bedrooms | 3 |
| Bathrooms | 2.50 |
| Full Baths | 2 |
| Half Baths | 1 |
| Square Footage | 1,777 |
| Acres | 0.00 |
| Year Built | 2024 |
| Type | Single Family |

| | |
|----------|-------------|
| Sub-Type | Half Duplex |
| Style | 2 Storey |
| Status | Active |

Community Information

| | |
|-------------|-----------------------|
| Address | 7714 174a Avenue |
| Area | Edmonton |
| Subdivision | Crystallina Nera West |
| City | Edmonton |
| County | ALBERTA |
| Province | AB |
| Postal Code | T5Z 0W5 |

Amenities

| | |
|-----------|----------------------------|
| Amenities | Carbon Monoxide Detectors, |
| Parking | Double Garage Attached |

Interior

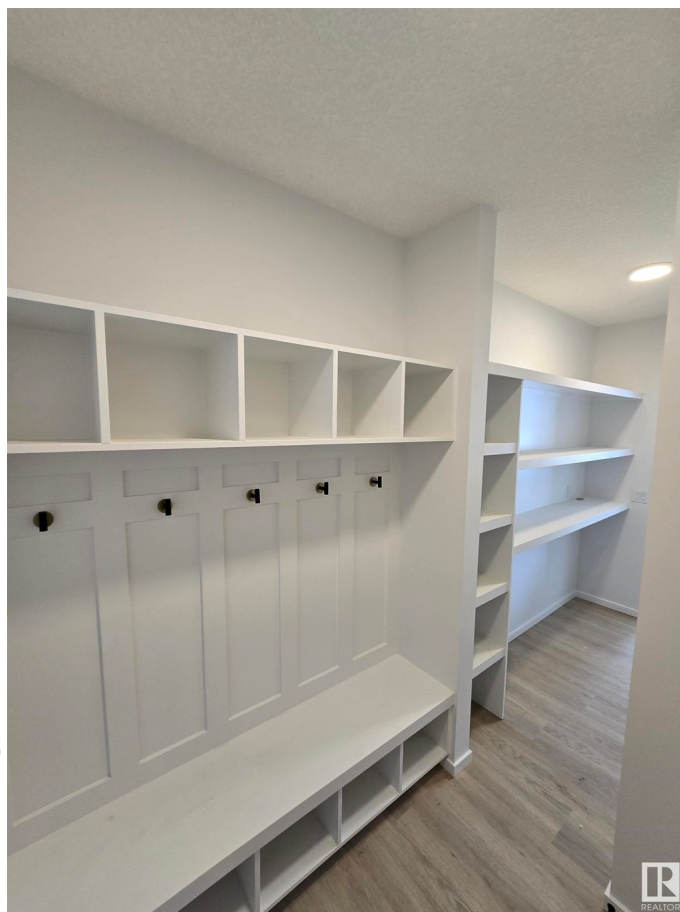
| | |
|-------------------|-------------------------------|
| Interior Features | ensuite bathroom |
| Appliances | Garage Control, Garage Opener |
| Heating | Forced Air-1, Natural Gas |
| Fireplaces | Insert |
| Stories | 2 |
| Has Basement | Yes |
| Basement | Full, Unfinished |

Exterior

| | |
|-------------------|-----------------------------|
| Exterior | Wood, Stone, Vinyl |
| Exterior Features | Backs Onto Park/Trees, Flat |
| Roof | Asphalt Shingles |
| Construction | Wood, Stone, Vinyl |
| Foundation | Concrete Perimeter |

Additional Information

| | |
|----------------|------------------|
| Date Listed | March 28th, 2025 |
| Days on Market | 20 |
| Zoning | Zone 28 |



DATA IS DEEMED RELIABLE BUT IS NOT GUARANTEED ACCURATE BY THE REALTORS® ASSOCIATION OF EDMONTON. COPYRIGHT 2025 BY THE REALTORS® ASSOCIATION OF EDMONTON. ALL RIGHTS RESERVED. Trademarks are owned or controlled by the Canadian Real Estate Association (CREA) and identify real

estate professionals who are members of CREA (REALTOR®®, REALTORS®®) and/or the quality of services they provide (MLS®®, Multiple Listing Service®®)

Listing information last updated on April 17th, 2025 at 1:02am MDT