

## \$315,000 - 310 10142 111 Street, Edmonton

MLS® #E4426498

**\$315,000**

2 Bedroom, 2.00 Bathroom, 969 sqft  
Condo / Townhouse on 0.00 Acres

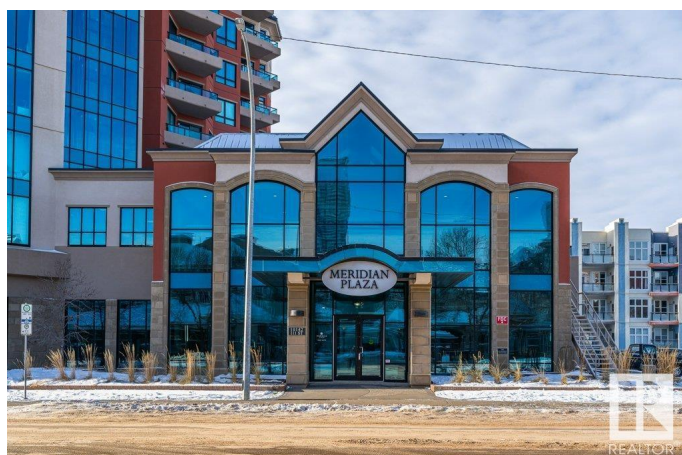
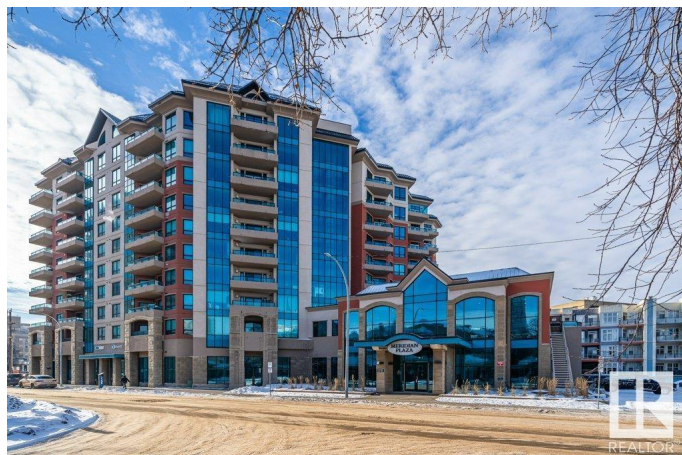
W&hkw&ant&win, Edmonton, AB

Sweet home with 2 Bedroom 2 Bathroom Condo in the heart of Edmonton, Meridian Plaza! Centrally located downtown and within walking distance to countless amenities! The home boasts an open-concept kitchen with stainless steel appliances, a pantry with storage, a living space with a gas fireplace and a West-facing balcony. The condo features an engineered hardwood, in-suite laundry room with a washer and dryer. Master has a gorgeous 4 piece bath ensuite, walk-in closet and second spacious bedroom with good size closet. It also comes with 2 UNDERGROUND PARKING STALLS and STORAGE. The building is professionally managed and well maintained, and offers a range of amenities, including a fitness center, an event center with a kitchen, an open atrium, an owner's lounge, a guest suite, underground visitor parking, a bike storage room, and an on-site manager. This condo has UNBELIEVABLE value! It is a must-see.

Built in 2009

### Essential Information

MLS® #	E4426498
Price	\$315,000
Bedrooms	2
Bathrooms	2.00



Full Baths	2
Square Footage	969
Acres	0.00
Year Built	2009
Type	Condo / Townhouse
Sub-Type	Apartment High Rise
Style	Single Level Apartment
Status	Active

### Community Information

Address	310 10142 111 Street
Area	Edmonton
Subdivision	WÃ©hkwÃ©ntÃ©win
City	Edmonton
County	ALBERTA
Province	AB
Postal Code	T5K 1K6

### Amenities

Amenities	Air Conditioner, Ceiling 9 ft., Exercise Room, Guest Suite, Parking-Visitor, Party Room, Security Door, Vinyl Windows, See Remarks
Parking Spaces	2
Parking	Underground

### Interior

Interior Features	ensuite bathroom
Appliances	Air Conditioning-Central, Dishwasher-Built-In, Dryer, Hood Fan, Oven-Microwave, Refrigerator, Stove-Electric, Washer, Window Coverings
Heating	Heat Pump, Natural Gas
Fireplace	Yes
Fireplaces	Mantel
# of Stories	10
Stories	1
Has Basement	Yes
Basement	None, No Basement

### Exterior

Exterior	Concrete, Stucco
Exterior Features	Public Transportation, Schools, Shopping Nearby, View City
Roof	Metal
Construction	Concrete, Stucco
Foundation	Concrete Perimeter

### **School Information**

Elementary	W&hkw&ant&win School
Middle	Westminster School
High	Victoria School

### **Additional Information**

Date Listed	March 20th, 2025
Days on Market	29
Zoning	Zone 12
Condo Fee	\$704

DATA IS DEEMED RELIABLE BUT IS NOT GUARANTEED ACCURATE BY THE REALTORS® ASSOCIATION OF EDMONTON. COPYRIGHT 2025 BY THE REALTORS® ASSOCIATION OF EDMONTON. ALL RIGHTS RESERVED. Trademarks are owned or controlled by the Canadian Real Estate Association (CREA) and identify real estate professionals who are members of CREA (REALTOR®, REALTORS®) and/or the quality of services they provide (MLS®, Multiple Listing Service®)

Listing information last updated on April 18th, 2025 at 4:47am MDT