

Courtesy Of Kelly A Grant Of Sweetly

\$225,000 - 10314 158 Avenue, Edmonton

MLS® #E4424960

\$225,000

4 Bedroom, 2.00 Bathroom, 1,016 sqft
Single Family on 0.00 Acres

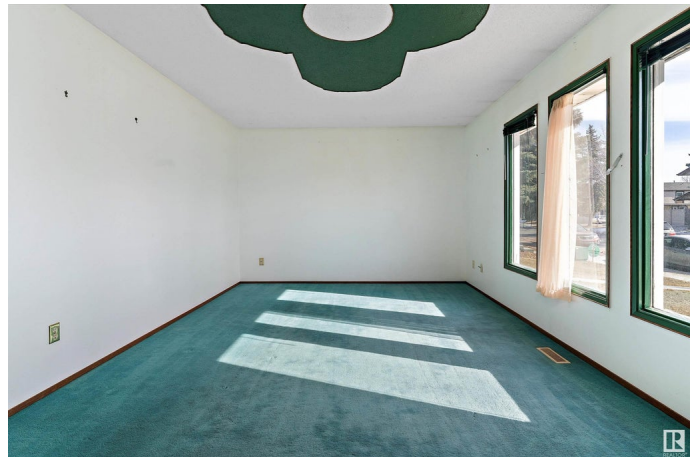
Beaumaris, Edmonton, AB

Charming half duplex bungalow in Beaumaris! This spacious 1,015 sq. ft. home features 4 bedrooms and 2 bathrooms. The main floor boasts a large living room, dining room, kitchen, 2 bedrooms, and a 4-piece bathroom. The fully finished basement includes a rec room, second kitchen, 2 additional bedrooms, and another 4-piece bathroom. Enjoy the fenced backyard with a single oversized detached garage. Perfectly located within walking distance to Beaumaris Lake, park, playground, bus stop, schools, and grocery stores. This home offers excellent potential for comfortable living or an investment opportunity! This property is pre-inspected, available for your review and guaranteed clean for your move in date - visit REALTOR site for details.

Built in 1978

Essential Information

MLS® #	E4424960
Price	\$225,000
Bedrooms	4
Bathrooms	2.00
Full Baths	2
Square Footage	1,016
Acres	0.00
Year Built	1978



Type	Single Family
Sub-Type	Half Duplex
Style	Bungalow
Status	Active

Community Information

Address	10314 158 Avenue
Area	Edmonton
Subdivision	Beaumaris
City	Edmonton
County	ALBERTA
Province	AB
Postal Code	T5X 4H4

Amenities

Amenities	See Remarks
Parking Spaces	3
Parking	Over Sized, Single Garage Detached

Interior

Appliances	Dryer, Fan-Ceiling, Freezer, Furniture Included, Hood Fan, Washer, Window Coverings, Refrigerators-Two, Stoves-Two
Heating	Forced Air-1, Natural Gas
Stories	2
Has Basement	Yes
Basement	Full, Finished

Exterior

Exterior	Wood, Metal
Exterior Features	Back Lane, Fenced, Park/Reserve, Playground Nearby, Public Transportation, Schools, Shopping Nearby
Roof	Asphalt Shingles
Construction	Wood, Metal
Foundation	Concrete Perimeter

School Information

Elementary	Lorelei School
Middle	Mary Butterworth School
High	Queen Elizabeth School

Additional Information

Date Listed March 10th, 2025

Days on Market 2

Zoning Zone 27

DATA IS DEEMED RELIABLE BUT IS NOT GUARANTEED ACCURATE BY THE REALTORS® ASSOCIATION OF EDMONTON. COPYRIGHT 2025 BY THE REALTORS® ASSOCIATION OF EDMONTON. ALL RIGHTS RESERVED. Trademarks are owned or controlled by the Canadian Real Estate Association (CREA) and identify real estate professionals who are members of CREA (REALTOR®, REALTORS®) and/or the quality of services they provide (MLS®, Multiple Listing Service®)

Listing information last updated on March 12th, 2025 at 3:02pm MDT