

\$699,900 - 535 Albany Way, Edmonton

MLS® #E4424554

\$699,900

3 Bedroom, 3.50 Bathroom, 2,495 sqft
Single Family on 0.00 Acres

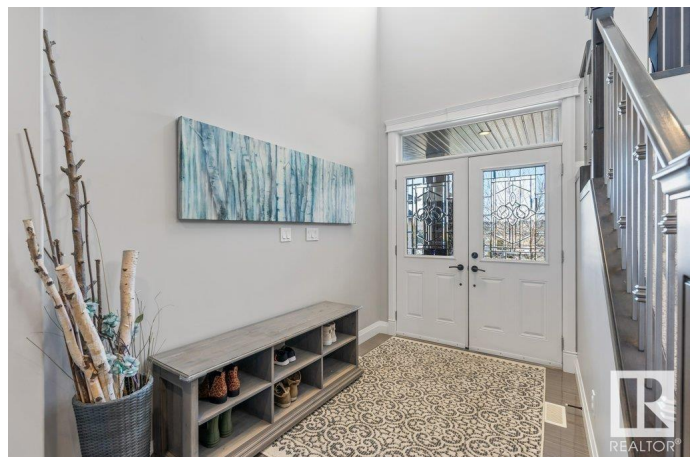
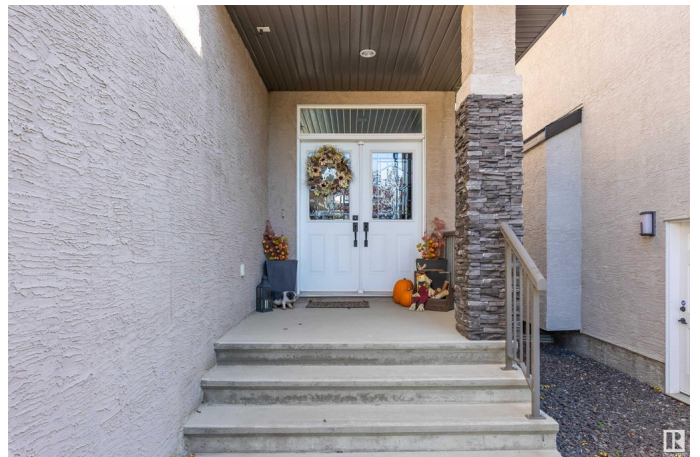
Albany, Edmonton, AB

This executive 2,495 sq. ft. fully finished two-story home is loaded with premium upgrades and backs onto a serene environmental pond. The open-concept layout is perfect for family living and entertaining. The gourmet kitchen features granite countertops, a breakfast bar island, and built-in S/S appliances. The dining area boasts a coffered ceiling, while the main floor includes a den, 2-pce bath, and a great room with a gas fireplace. Upstairs, you'll find a bonus room with a 2nd fireplace, three bedrooms, a 4-pce bath, and a laundry room. The primary suite is a true retreat, offering a 5-pce ensuite and walk-in closet. The finished basement is built for entertaining, featuring a wet bar, rec room, flex room, 4-piece bath, and ample storage. The oversized double-attached garage includes epoxy flooring and a drain. Outside, enjoy a zero-maintenance yard with a large deck, stamped concrete patio, and breathtaking views. Additional highlights: Central A/C, built-in speakers, and close to all amenities.

Built in 2013

Essential Information

MLS® #	E4424554
Price	\$699,900



Bedrooms	3
Bathrooms	3.50
Full Baths	3
Half Baths	1
Square Footage	2,495
Acres	0.00
Year Built	2013
Type	Single Family
Sub-Type	Detached Single Family
Style	2 Storey
Status	Active

Community Information

Address	535 Albany Way
Area	Edmonton
Subdivision	Albany
City	Edmonton
County	ALBERTA
Province	AB
Postal Code	T6V 0H9

Amenities

Amenities	Air Conditioner, Deck, Wet Bar, See Remarks
Parking	Double Garage Attached

Interior

Interior Features	ensuite bathroom
Appliances	Air Conditioning-Central, Dishwasher-Built-In, Garage Control, Garage Opener, Oven-Built-In, Oven-Microwave, Refrigerator, Stove-Countertop Gas, Washer, Window Coverings, Refrigerators-Two
Heating	Forced Air-2, Natural Gas
Fireplace	Yes
Fireplaces	Stone Facing
Stories	3
Has Basement	Yes
Basement	Full, Finished

Exterior

Exterior	Wood, Stone, Stucco
----------	---------------------

Exterior Features	Backs Onto Park/Trees, Fenced, Landscaped, Park/Reserve, Playground Nearby, Public Transportation, Schools, Shopping Nearby
Roof	Asphalt Shingles
Construction	Wood, Stone, Stucco
Foundation	Concrete Perimeter

School Information

Elementary	Lorelei
Middle	Mary Butterworth
High	Ross Sheppard

Additional Information

Date Listed	March 7th, 2025
Days on Market	5
Zoning	Zone 27

DATA IS DEEMED RELIABLE BUT IS NOT GUARANTEED ACCURATE BY THE REALTORS® ASSOCIATION OF EDMONTON. COPYRIGHT 2025 BY THE REALTORS® ASSOCIATION OF EDMONTON. ALL RIGHTS RESERVED. Trademarks are owned or controlled by the Canadian Real Estate Association (CREA) and identify real estate professionals who are members of CREA (REALTOR®, REALTORS®) and/or the quality of services they provide (MLS®, Multiple Listing Service®)

Listing information last updated on March 12th, 2025 at 2:02pm MDT