

## \$510,000 - N/A, Sherwood Park

MLS® #E4423783

**\$510,000**

3 Bedroom, 2.00 Bathroom, 1,696 sqft

Single Family on 0.00 Acres

Glen Allan, Sherwood Park, AB

\*Please note\* property is sold "as is where is at time of possession". No warranties or representations.

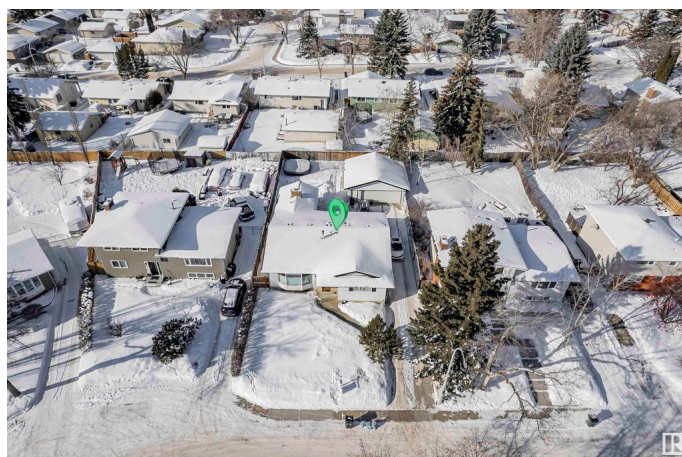
Built in 1972

### Essential Information

MLS® #	E4423783
Price	\$510,000
Bedrooms	3
Bathrooms	2.00
Full Baths	2
Square Footage	1,696
Acres	0.00
Year Built	1972
Type	Single Family
Sub-Type	Detached Single Family
Style	Bungalow
Status	Active

### Community Information

Address	N/A
Area	Sherwood Park
Subdivision	Glen Allan
City	Sherwood Park
County	ALBERTA
Province	AB
Postal Code	T8A 3A1



## Amenities

Amenities	Deck
Parking	Double Garage Detached

## Interior

Interior Features	ensuite bathroom
Appliances	See Remarks
Heating	Forced Air-2, Natural Gas
Stories	1
Has Basement	Yes
Basement	Full, Partially Finished

## Exterior

Exterior	Wood, Vinyl
Exterior Features	Fenced, Landscaped, Playground Nearby, Shopping Nearby
Roof	Asphalt Shingles
Construction	Wood, Vinyl
Foundation	Concrete Perimeter

## Additional Information

Date Listed	March 3rd, 2025
Days on Market	47
Zoning	Zone 25

DATA IS DEEMED RELIABLE BUT IS NOT GUARANTEED ACCURATE BY THE REALTORS® ASSOCIATION OF EDMONTON. COPYRIGHT 2025 BY THE REALTORS® ASSOCIATION OF EDMONTON. ALL RIGHTS RESERVED. Trademarks are owned or controlled by the Canadian Real Estate Association (CREA) and identify real estate professionals who are members of CREA (REALTOR®, REALTORS®) and/or the quality of services they provide (MLS®, Multiple Listing Service®)

Listing information last updated on April 19th, 2025 at 3:32pm MDT