

## \$439,900 - 206 Salisbury Way, Sherwood Park

MLS® #E4419465

**\$439,900**

3 Bedroom, 2.50 Bathroom, 1,514 sqft

Single Family on 0.00 Acres

Salisbury Village, Sherwood Park, AB

Enjoy a connected and effortless lifestyle in Salisbury Village! Trails, walkways, parks, nearby schools and easy access to restaurants is everything you need. Spanning approx. 1514 SQFT, the Kenton offers a thoughtfully designed layout and modern features. As you step inside, you'll be greeted by an inviting open concept main floor that seamlessly integrates the living, dining, and kitchen areas. Abundant natural light flowing through large windows creating a warm atmosphere for daily living and entertaining. Upstairs, you'll find three spacious bedrooms that provide comfortable retreats for the entire family. The primary bedroom is a true oasis, complete with an en-suite bathroom for added convenience. **\*\*PLEASE NOTE\*\* PICTURES ARE OF SIMILAR HOME; ACTUAL HOME, PLANS, FIXTURES, AND FINISHES MAY VARY AND ARE SUBJECT TO AVAILABILITY/CHANGES WITHOUT NOTICE. COMPLETION ESTIMATED MAY-JUL 2025.**

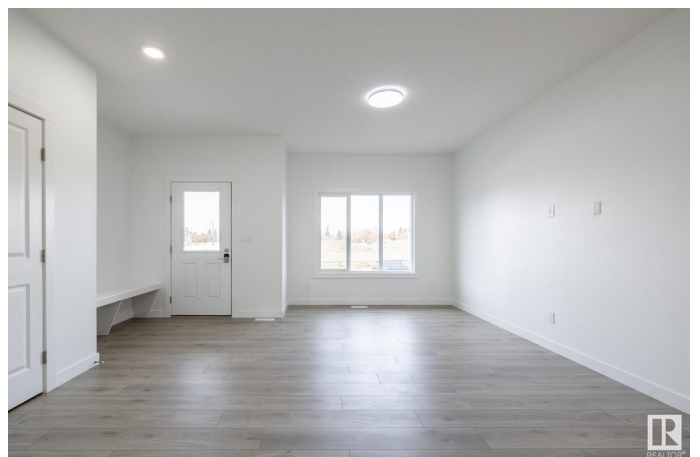
Built in 2025

### Essential Information

MLS® # E4419465

Price \$439,900

Bedrooms 3



Bathrooms	2.50
Full Baths	2
Half Baths	1
Square Footage	1,514
Acres	0.00
Year Built	2025
Type	Single Family
Sub-Type	Residential Attached
Style	2 Storey
Status	Active

### Community Information

Address	206 Salisbury Way
Area	Sherwood Park
Subdivision	Salisbury Village
City	Sherwood Park
County	ALBERTA
Province	AB
Postal Code	T8B 0E8

### Amenities

Amenities	Ceiling 9 ft., Deck, Detectors Smoke, See Remarks
Parking Spaces	2
Parking	Double Garage Detached

### Interior

Interior Features	ensuite bathroom
Appliances	See Remarks
Heating	Forced Air-1, Natural Gas
Stories	2
Has Basement	Yes
Basement	Full, Unfinished

### Exterior

Exterior	Wood, Vinyl
Exterior Features	Back Lane, Flat Site, Golf Nearby, Playground Nearby, Public Transportation, Schools, Shopping Nearby, See Remarks
Roof	Asphalt Shingles
Construction	Wood, Vinyl

Foundation                      Concrete Perimeter

**Additional Information**

Date Listed                      January 28th, 2025

Days on Market                82

Zoning                            Zone 25

DATA IS DEEMED RELIABLE BUT IS NOT GUARANTEED ACCURATE BY THE REALTORS® ASSOCIATION OF EDMONTON. COPYRIGHT 2025 BY THE REALTORS® ASSOCIATION OF EDMONTON. ALL RIGHTS RESERVED.Trademarks are owned or controlled by the Canadian Real Estate Association (CREA) and identify real estate professionals who are members of CREA (REALTOR®, REALTORS®) and/or the quality of services they provide (MLS®, Multiple Listing Service®)

Listing information last updated on April 20th, 2025 at 6:02am MDT